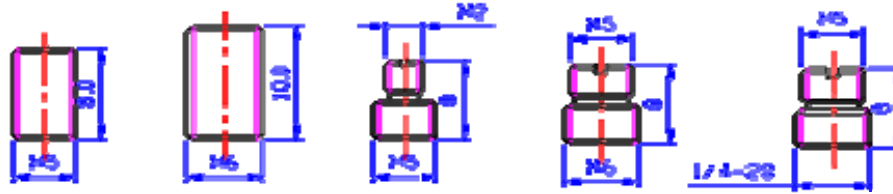


Mounting stud/ base

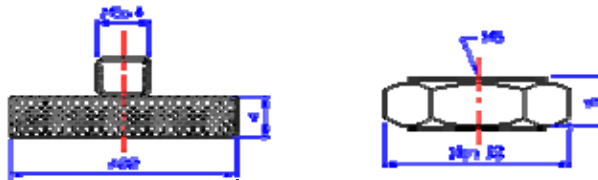
1. Mounting stud



Mounting Stud Type	M5-M5	M6-M6	M3-M5	M5-M6	M5-1/4x28
(NCm)	150 ~ 200	4600 ~ 800	90 ~ 130	150 ~ 200	150 ~ 200

2. Adhesive mounting base

A. Normal adhesive mounting base

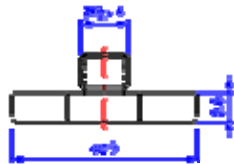


Spec.: $\Phi 22$

Hex.18

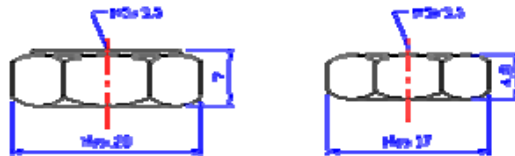
B. Insulating adhesive mounting base

a) Insulating adhesive mounting base with outer screw thread



Spec.: $\Phi 19$

b) Insulating adhesive mounting base with inner screw thread

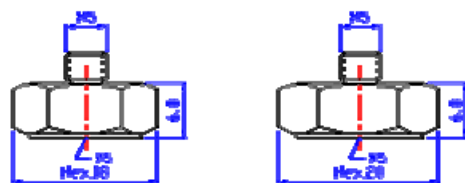


Spec.: Hex.20

Hex.17

3. Single-axis insulating mounting base

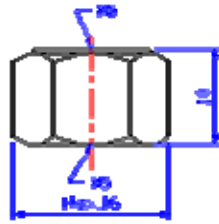
A. insulating mounting base with bolt



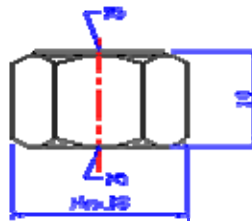
Spec.: Hex.18

Hex.20

B. insulating mounting base with inner screw



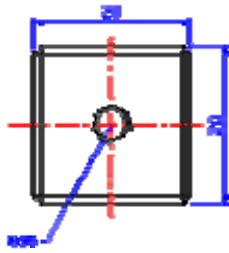
Spec.: Hex.16



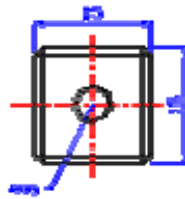
Hex.18

4. Triaxial mounting cube

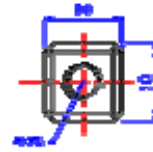
A. Stainless steel triaxial mounting cube



Spec.: 20x20x20(mm)

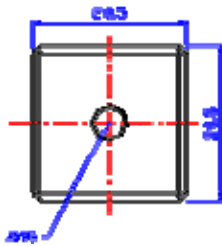


15x15x15(mm)

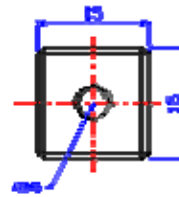


10x10x10(mm)

B. insulating triaxial mounting cube



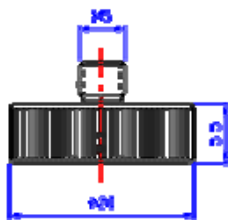
Spec.: 20x20x20(mm)



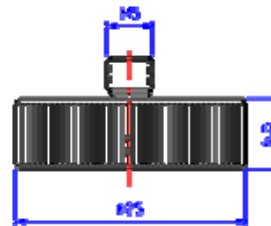
15x15x15(mm)

5. Magnetic mounting base

A. Magnetic base with M5 stud

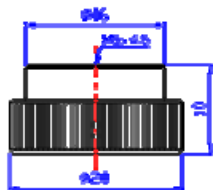


Spec.: $\Phi 20$ (mm)



$\Phi 25$ (mm)

B. Insulating magnetic base with M5 tapped hole



Spec.: $\Phi 20$ (mm)

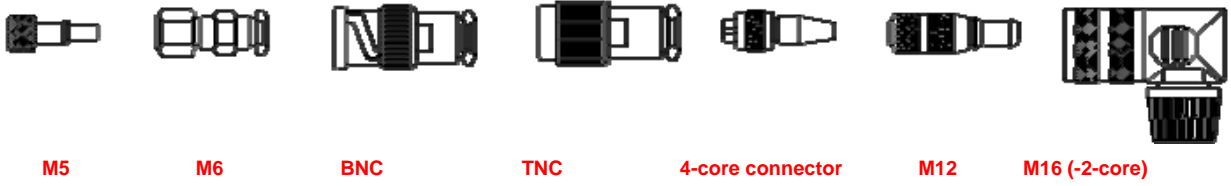
Cable

Model	Capacitance (pF/m)	Jacket material	Temperature (°C)	Signal type	Connector
Φ2 mm cable	105	PVC	90	Charge, Voltage	M5, M6, BNC
Φ3 mm cable	95	PVC	90	Charge, Voltage	M5, M6, BNC, TNC
Φ1.6 mm high temperature cable	105	F46	200	Charge, Voltage	M5, BNC
Φ2 mm high temperature cable	105	F46	200	Charge, Voltage	M5, M6, BNC
Φ3.5 mm high temperature 2-core shield cable	80	F46	200	Voltage of low resistance	M12, M16
Φ.5 mm high temperature 4-core shield cable	80	F46	200	Voltage of low resistance	4-core connector
Φ4.5 mm 2-core shield cable	65	PVC	90	Voltage of low resistance	M12, M16
Φ5 mm coaxial shield cable	105	PVC	90	Voltage of low resistance	BNC, TNC
Φ6 mm 4-core shield cable	80	PVC	90	Voltage of low resistance	M12

Note: the length of the cable is 1.2m and can be user adjustable.

Connector / Adaptor

1. Cable Connector



2. Adaptor

