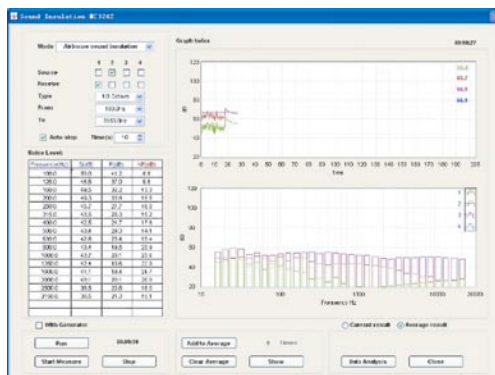
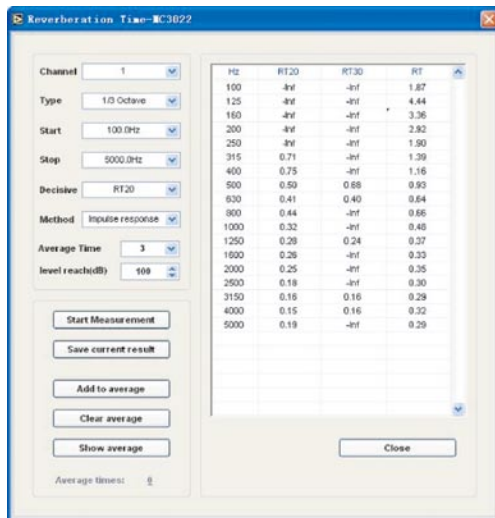


### Architectural Module

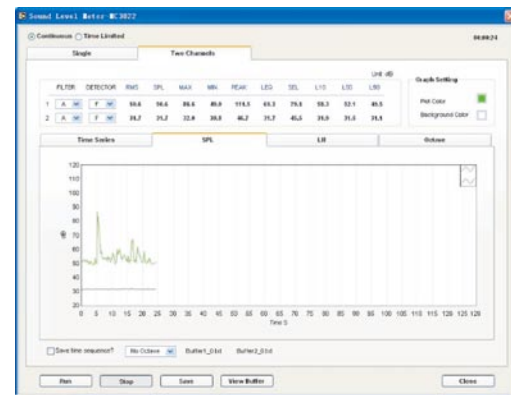
VA-Lab ARCH module provides reverberation time measurements and sound transmission loss measurements according to ISO standards.

#### Main Features of VA-Lab ARCH

- Two methods: interrupted noise, impulse response measure reverberation time in 1/1 or 1/3 octave frequencies according to ISO 3382
- Sound pressure decay curves display, support user-defined reverberation time calculation
- Airborne sound insulation of building elements Measurement
- Measurements of impact sound insulation of floors
- Automatically calculate single-number quantity:  $R_w$ ,  $X_w$ , and its spectrum adaptation



### Environment Module



VA-Lab ENV is a powerful sound level meter. It supports maximum 10 channel sound pressure level measurements at 10 locations. Each channel can perform multi-task analysis such as statistical levels, 1/3 octave, and levels vs. time.

VA-Lab ENV has built-in data logger function, it can continuously log the overall and spectral data into the memory.

Using MC 3022 and MPA215 microphones, VA-Lab ENV satisfies IEC 61672 Class II accuracy requirements.

#### Main Features of VA-Lab ENV

- Simultaneously measure SPL, RMS, MAX, MIN, PEAK, LEQ, SEL, L10, L50, and L90
- A, C, Lin weighting
- Fast, Slow, Impulse
- Continuous, Time limited optionally
- Spectral data logger associated time history 1/1 or 1/3 octave Real-time display
- Sound level analysis at user defined intervals
- Long time monitoring of sound pressure levels, up to 5 hours in one graph