

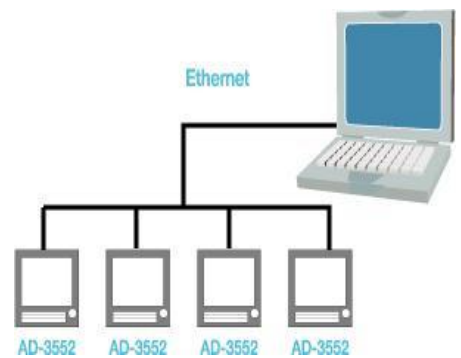
AD-3552 Performance Enhanced FFT Comparator



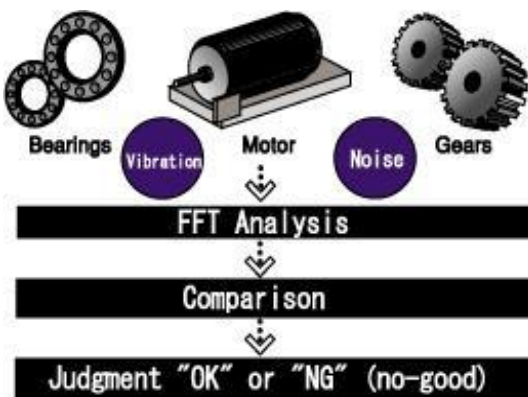
- Compact, lightweight 1x1.4DIN enclosure easily mounted into rack.
- Dedicated for comparator, easy to handle.
- Compatible to Ethernet. Central control by a personal computer.
- Effortless operations through touch panel interface.
- With the utility software(provided free), files can be transferred between a PC and the AD-3552 FFT Comparators through Ethernet.

AD-3552 제품특징

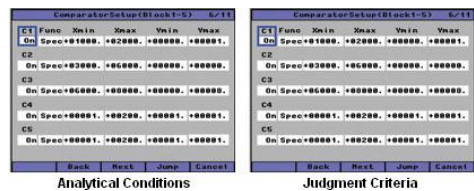
- When a single AD3551 FFT comparator is in use, a setup wizard allows easy setting of conditions
- A setup wizard allows easy setting of conditions.
- The AD-3552 FFT Comparator has a built-in PC that features superior reliability and fast response.
- Setting judgment parameters for level, partial overall, octave band, total overall is practicable. (Block: 20 types, Shape: 1 type, Total overall: 1 type)
- Judgments under complex conditions can be delivered by combining comparator logic (AND, OR, NOT)
- Using a DI/DO board, the AD-3552 FFT Comparator can output judgment results and be controlled externally.



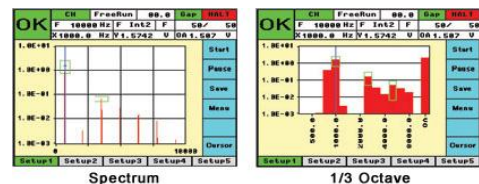
어플리케이션/프로세스



설정화면



그래프표시화면



AD-3552 Front Image



AD-3552 Rear Image



AD-3552 Specification

Input Section

Maximum Analysis Frequency	20kHz
Number of Input Channels	1
Input Connector	BNC
Input Form	Single-end
Input Impedance	1MΩ
Input Capacity	100pF or below
Input Voltage Range	100mVrms, 1Vrms, 10Vrms
Input Coupling	AC, DC, ICP (0.5mA, 4mA)
AC Coupling Characteristic	-3dB at approx. 0.5Hz cutoff frequency
Input Tolerance	AC100Vrms
Dynamic Range	80dB (typical)
Overload Detection	A/D data over 91% of full scale
Underload Detection	A/D data less than 5% of full scale

Analysis Section

Analysis Frequency Range	100, 200, 400, 500, 800 (Hz) / 1, 2, 4, 5, 10, 20 (kHz)
Sampling Frequency	2.56 times of analysis frequency range
Sampling Clock	Internal sampling
Aliasing Filter	Correlated with analysis frequency range
Block Size	512, 1024, 2048, 4096 points
Real-Time Frequency	2kHz
Frequency Resolution	201, 401, 801, 1601 lines
Window Function	Hanning, Flat-topped, Exponential
Data Acquisition Mode	Free-run, First-trigger, Every-trigger
Averaging	Frequency-domain: Added average, Peak hold, Exponential average
	Averaging: 1 to 9999 times
	Overlap: Max. 93.75%
Trigger	Trigger source: Input channel, External input channel
	Trigger level: Designated with percentage of full scale
	Full scale of external input channel is 25V.
	Trigger slope: +/-
Calibration	Trigger delay: -100% to +100% (Frame size ratio) Linear, dB

Analytical Function

Time-axis waveform, Power spectrum, 1/1 octave, 1/3

Display

Display Scaling	Full scale, Fixed scale
X-Axis	Linear/Octave
Y-Axis	Linear/Log/dB
Display Format	Amplitude/Power

Calculation

Time-domain	Differentiation/Integration
Frequency-domain	Differentiation/Integration
Acoustic weighting	A, C, FLAT

Comparator Function

Block Comparators	20 types
Shape Comparator	1 type
Overall Comparator	1 type
Judgment Method	Level, Overall
Logic	AND, OR, NOT
Judgment Display	"OK", "NG" (Green, Red, Yellow)
Judgment Output	Contact output of BUSY, OK and NG signals
Judgment Start External Input	Contact input

Save/Recall

Measurement data(MFU file), Result list file(CSV format),Setup file *Measurement data and Result list file for saving only.
--

Display

5.7-inch STN color LCD (320x240 dots)	Resistive analog touch screen
---------------------------------------	-------------------------------

Touch Panel

Interface

Ethernet	10Base-T
DO(Digital Output)	31ch (Busy, each comparator judgment result, total comparator
DI(Digital Input)	11ch (Start, Stop, Pause/Restart, Setup file 1 to 20 read)
Serial Port	RS232C

General Specification

Operating Temperature and Humidity	10-40°C, RH 85% or below (Non condensing)
Power Supply	85~250V AC(50/60Hz)
External Dimensions	144(H)×192(W)×169(D)mm
Weight	Approx. 5kg